

Intelligent Interactive Interface

Automatic In-Rip Trapping/Interactive Trapping



www.trapping.org

I-Trap™

Working with the Jobs Manager

I-Trap version 3.0

Revised: December, 2006

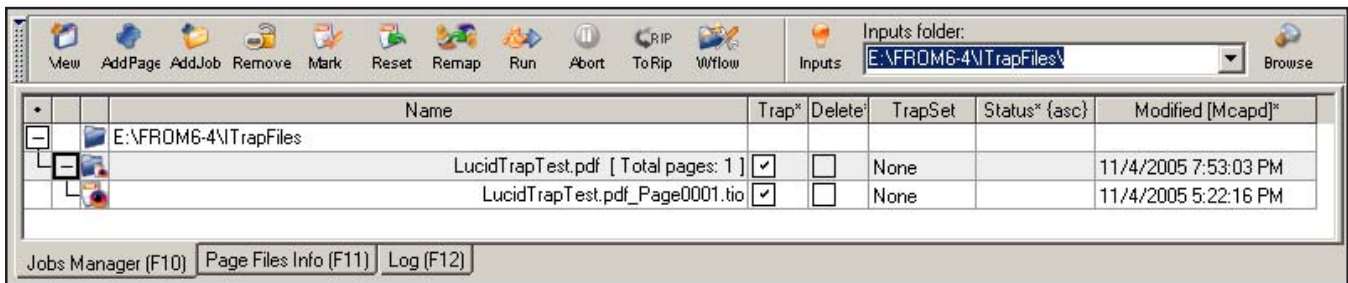
Working with the Jobs Manager

If the Lucid Trapping plug-in has been configured to Prepare for I-Trap, it automatically opens the Viewer with the current jobs' TIO files listed in the Jobs manager panel. For multi-page jobs, all pages have identical TIO files created by the Trapping plug-in.

When the TIO is listed in the Jobs Manager panel, you can select it and double click (or press the leftmost View button on the JM toolbar) to open the corresponding page in the display window and information.

Then the trapping parameters you can edit as described in the Setting Trapping parameters chapter. You can also press the left button on the panel toolbar to open the TIO and page source view.

Jobs manager (JM) is opened by default at the bottom of the Viewer work area. Files prepared for trapping by the Lucid Trapping plug-in are listed in the JM table. The **Trap** checkbox enables applying final trapping to the checked file. Only the pages selected for manual trapping need to be opened in the viewer. The **TrapSet** column indicates what TrapSet was selected for the page. You can change the selected TrapSet if you click on the cell. The drop down box appears and presents all available TrapSets. In a page that contains Trap areas (zones) the TrapSet will be applied to the default zone #0.

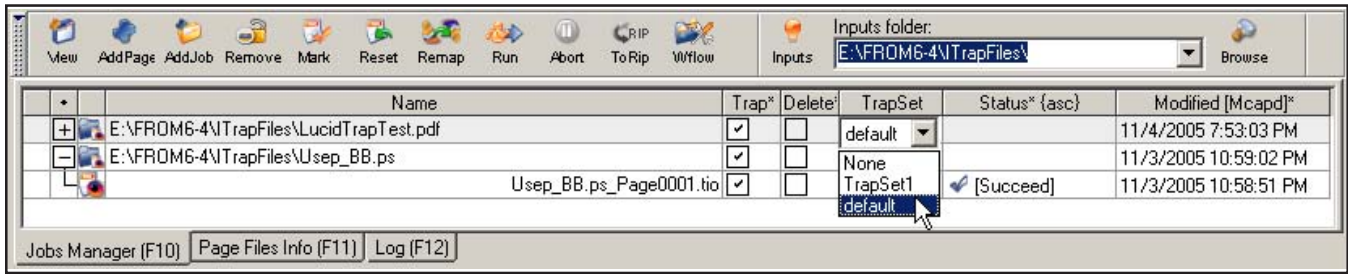


Press Run button on the JM toolbar to trap the pages with the checkboxes "Trap" enabled and send them to final output (to the Rip or/and output plug-ins)

Three left-most columns of the table (marked with a black dot) expand / collapse the representation of the job's files. You can enable one of the three possible representations right-clicking the header cell.

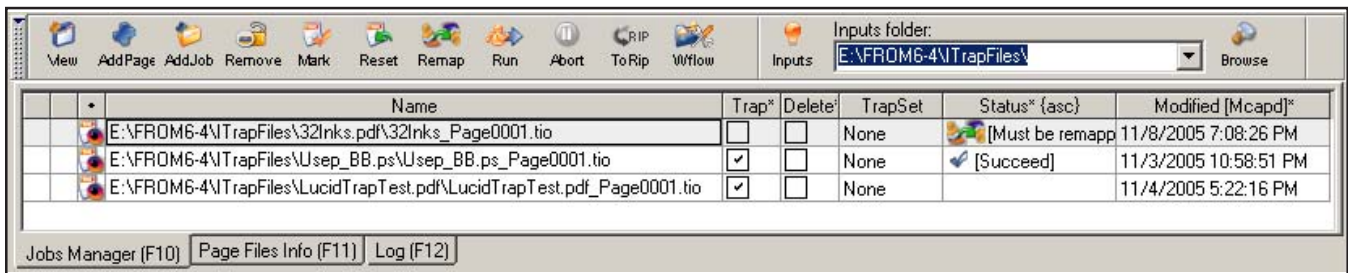
Full view shows the trapping temporary folder with current interactive jobs. The reduced view (figure below) shows the job name, which can be expanded /

collapsed pressing the "+" and "-" cells to show / hide the pages of the job (see the figure below).



The Status of a page indicates that it has been already trapped successfully

If you have many jobs added to the JM then you might wish to see plain pages list, as shown on the figure below.



The Status column indicates that one of the pages needs Inks re-mapping because it contains more than 16 inks in it

When the job is processed to output by the Run command trapping progress is displayed in the "Status" cell.

The **Delete** checkbox option allows deleting temporary source page data in T-RLE format and its TIO file after the job has been sent to the rip for final output.

Right-click on the **Trap** or **Delete** column header to enable or disable all checkboxes in that column. The JM panel can be hidden by clicking on the Hide Handle at the left of the panel or from the */View* menu.

The right-most column in the JM table contains several characteristics of the jobs (pages) added to JM: Modification date/time; Creation date/time; Date/time of adding the job to the JM; Date/time of processing the job; trapping duration for the processed job.

You can left-click to change the sorting order of the jobs (pages) according to

the selected option.

You can right-click to view a different option.


| Created [mCapd]* {dsc} | Added [mcApd]* {asc} | Modified [Mcapd]* {dsc} | Processed [mcaPd]* {dsc} | Duration [mcapD]* {dsc} |
|------------------------|----------------------|-------------------------|--------------------------|-------------------------|
| 11/4/2005 5:21:51 PM | 11/8/2005 7:05:48 PM | 11/4/2005 7:53:03 PM | 11/8/2005 7:56:48 PM | 43.22 sec |
| 11/3/2005 10:37:18 PM | 11/8/2005 7:07:08 PM | 11/3/2005 10:59:02 PM | | |
| 11/3/2005 10:37:44 PM | 11/8/2005 7:07:08 PM | 11/3/2005 10:58:51 PM | 11/3/2005 7:07:08 PM | |


Characteristics of the jobs in JM

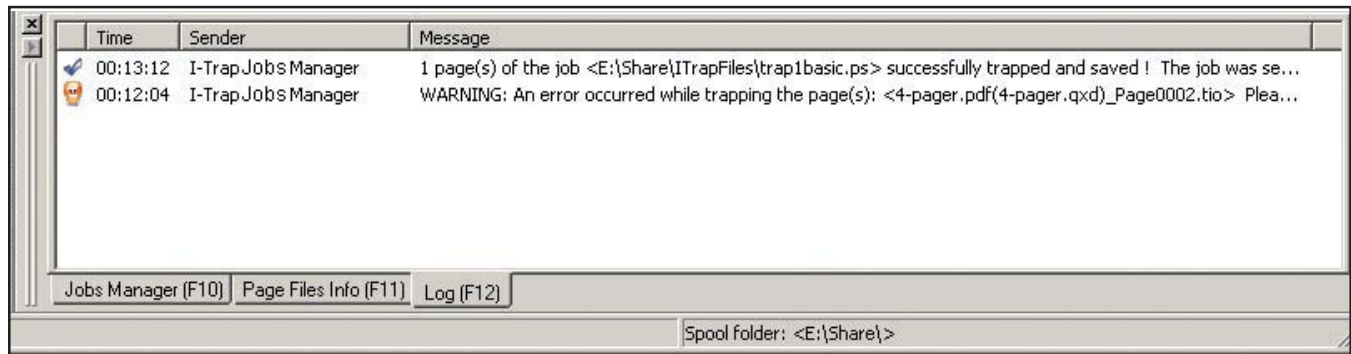
JM panel has two support tabs that show the information about the file currently open in the active view panel (e.g. if the Trap-on-fly is active the information shows the temporary file data).

With every page, TIO is supplied with the information about its modification date/time and file size.

Selected pages are marked by a light graycolor.


A “success” icon  marks the successfully trapped pages. A “failure”



 icon marks pages that had trapping problems and whose trapped results were not saved. You can view the problem report in the Log tab.





A four-page job had problems trapping page #2

Buttons on the toolbar and menu items in the */Jobs Manager* menu are used to add existing page(s) to the JM, remove pages from the JM, open them in the Viewer, apply trapping and send the jobs to the final output.

The **View button**  displays the source page view in the display panel. Several pages can be opened in the Viewer at once. Hotkey Ctrl-W will close the current view so you can quickly move through the JM table list to find the pages that need manual adjustment of the trapping parameters.


The **Add page(s)**  and **Add Job**  from a selected folder buttons let you select the TIO-s to be added to the JM table for interactive trapping, adjusting parameters and batch processing. You can select individual pages and multi-page jobs from a folder to add to the JM.

The **Remove button**  deletes the TIO from the JM table but does not delete the file or the job from its location.

The **Mark pages as ready for trapping button**  will be mostly used on remote unlicensed Viewer to save TIO parameters and release the job from the Viewer. The same or another Viewer can then pick it up for automatic trapping. You can use the pop-up menu right clicking on the job to release it.

The **Reset pages(s) status button**  allows re-trapping a job (page).


The **Remap button**  is used to call Inks remapping dialog.


The **Run button**  starts a "silent" trapping process of the pages marked in the Trap column. If the trapping was successful for all pages in the job, the job will be sent to the rip automatically. A «Success» icon marks successfully trapped pages in the "Status" column. A "Failure" icon marks pages that had trapping problems and whose trapped results were not saved.


The **Abort button**  aborts processing jobs to final output.

So, successfully trapped single page jobs are sent to the Rip with just the Run button and you do not need the Rip button for them.

Note! that before sending the job to save trapping by clicking the *Run button* it is necessary to save trapping parameters to the TIO file if they had been modified. The */Options/Preferences.../General* dialog lets you set the option to *Auto-Save changed TIO-s when batch trapping starts*.

The *ToRip button*  is enabled only after the page has been trapped. If you have saved the trapped data in an interactive mode, it is necessary to press the Rip button to send the job to the rip final output queue or call this option from the menu Jobs Manager/Send to Rip.

The *Workflow button*  calls the dialog, where you can add / modify the output parameters of your workflow. See the description in the section "I-Link Workflow" in this chapter.

The *Inputs button*  is enabled and the folder path displayed in the JM toolbar if you had selected it in the */Options/Preferences.../Workflow* dialog and started Inputs in the menu */Jobs Manager*. Toggle the watch folder by this button or by Ctrl-U hotkey.

The *Browse button*  allows changing the watch folder from the JM toolbar.

Several pages can be opened in the Viewer at once. The *Window* menu allows switching between the display windows and the information panel that shows the information for the window currently present in the display panel.

Hotkey *Ctrl-W* will close the current view so you can quickly move through the JM list to find the pages that need manual adjustment of the trapping parameters.